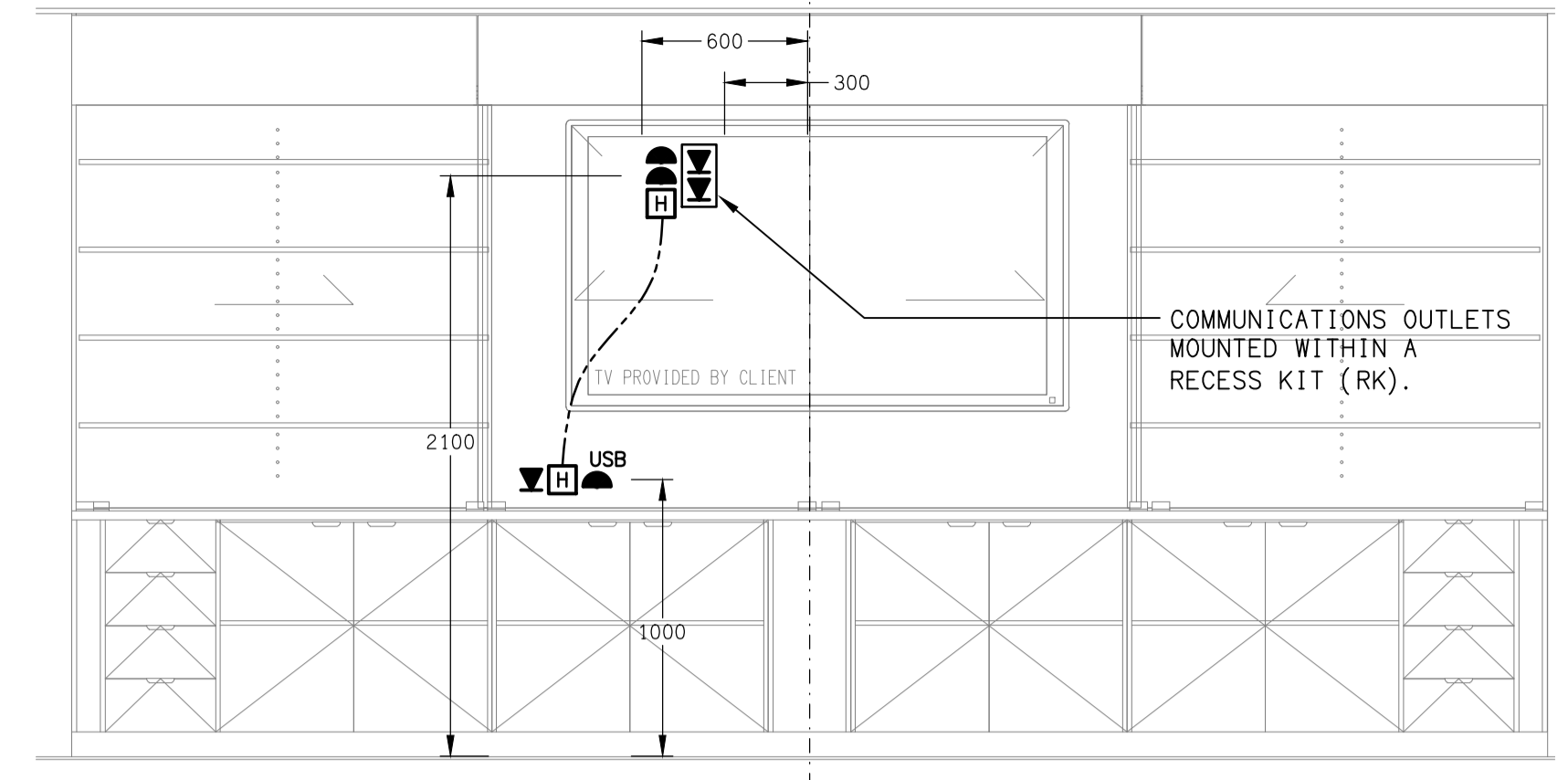


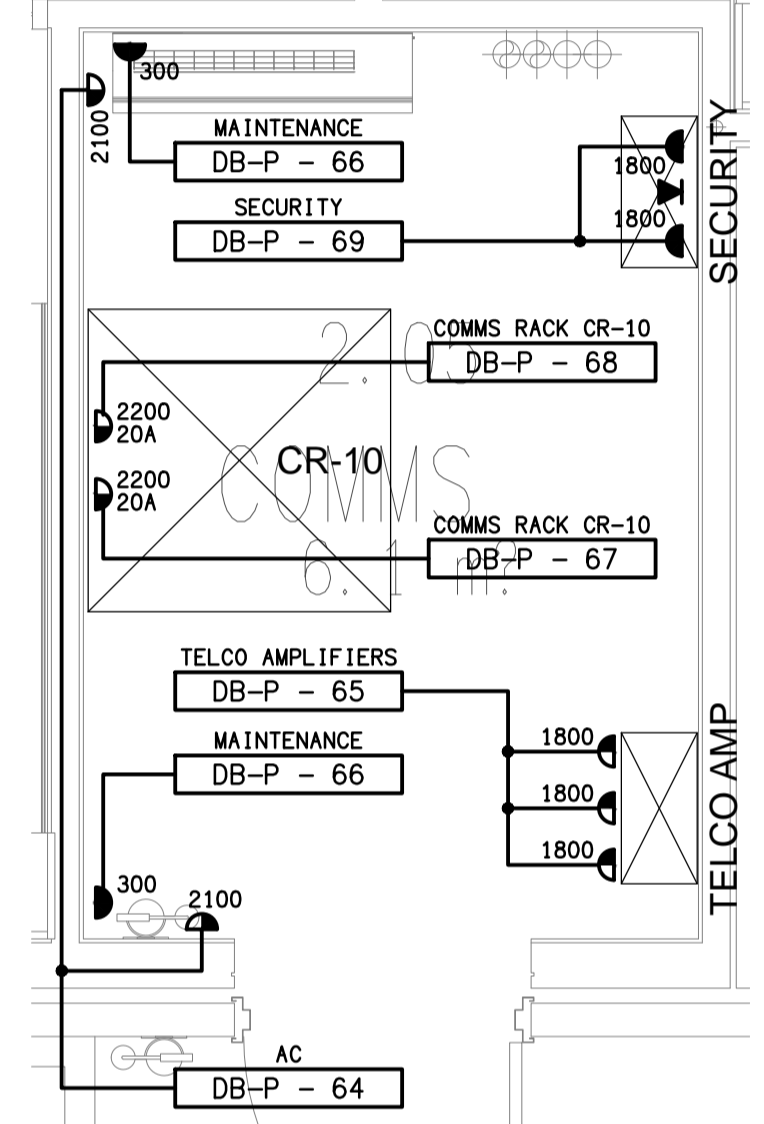
DETAIL A
STAFF KITCHENETTE ELEVATION
SCALE 1:25



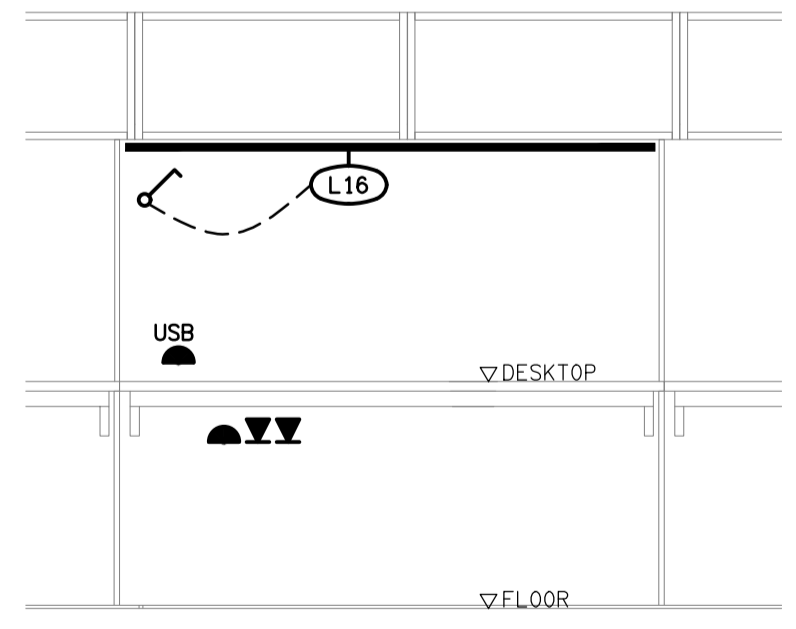
DETAIL C
TYPICAL TEACHERS WALL ELEVATION
SCALE 1:25

LOCATE THE POWER SUPPLY FOR THE LIFT AS PER THE LOCATION NOMINATED IN THE LIFT SHOP DRAWINGS. SHAFT ENTRY TO BE APPROXIMATELY 200mm BELOW TOP FLOOR LEVEL AND WITHIN 50mm OF THE CORNER OF SHAFT AS INDICATED IN DRAWING. AFTER ENTRY INTO THE LIFT SHAFT, LEAVE APPROXIMATELY 4M CABLE TAIL AND TERMINATE CABLE INTO 3-PHASE, 32AMP OUTLET (CLIPSAL CAT No. 56P0532 OR EQUAL) AND SUSPENDED OUTSIDE THE TOP FLOOR ENTRANCE FOR EASY ACCESS.

COORDINATE THE CAT-6/OUTLET POSITION WITH THE LIFT SUBCONTRACTOR FOR CONNECTION OF A CCTV-IP CAMERA WITHIN THE LIFT CAR.



DETAIL B
COMMUNICATION ROOM PLAN
SCALE 1:25



DETAIL D
TYPICAL OFFICE DESK (J11) ELEVATION
SCALE 1:25

ELECTRICAL DESIGN GROUP BRISBANE PTY LTD ACN 092 710 793 TRADING AS: ELECTRICAL DESIGN GROUP	THE COPYRIGHT OF THIS DRAWING REMAINS THE PROPERTY OF THE ELECTRICAL DESIGN GROUP. USE FIGURED DIMENSIONS IN PREFERENCE TO SCALE. ALL DIMENSIONS TO BE VERIFIED ONSITE.	ELECTRICAL DESIGN GROUP ELECTRICAL BUILDING SERVICES CONSULTANTS BRISBANE GOLD COAST P.O. Box 15, Sherwood Q. 4075 Phone: (07) 3278 4375 Email: brisbane@edg.net.au Web: www.edg.net.au	PROJECT: ORMISTON COLLEGE BUSINESS & ARTS PRECINCT 97 DUNDAS STREET WEST, ORMISTON	F CONSTRUCTION 16/06/2026 REV: DESCRIPTION: DATE: DRAWING: ELECTRICAL SERVICES LEVEL 1 FLOOR PLAN SCALE: 1:100 AT A1	PROJECT NO: C3666a DRAWING NO: E06 REVISION: F
			PROJECT: ORMISTON COLLEGE BUSINESS & ARTS PRECINCT 97 DUNDAS STREET WEST, ORMISTON	F CONSTRUCTION 16/06/2026 REV: DESCRIPTION: DATE: DRAWING: ELECTRICAL SERVICES LEVEL 1 FLOOR PLAN SCALE: 1:100 AT A1	PROJECT NO: C3666a DRAWING NO: E06 REVISION: F